

Young Families Connect • Spiritual Practices
• Spiritual Journey Groups • Companions
for the Journey • N2N • Science & Religion
• Book Groups • Thursday Fellowship •
Bible Studies • 10:10 • Men with Young
Families & Professionals • Presbyterian
Women • First Friday Forum • Young
Families Connect • Spiritual Practices •
Spiritual Journey Groups • Companions
for the Journey • N2N • Science & Religion

Finding

YOUR WAY

at L O P C

winter 2020

Groups to Join • Places to Serve

Does • Children's Ministry • Voyager
Ships • Reception Desk • Prayer Teams •
Floral Design Team • Kid's Rock • Special
Needs Ministry • Care Ministry • Big
Events Team • Sunday Morning Greeter •
Connecting Team • Festival Choir • Love
Does • Children's Ministry • Voyager
Ships • Reception Desk • Prayer Teams •
Needs Ministry • Care Ministry • Big
Events Team • Sunday Morning Greeter •

Groups to JOIN

Men with Young Families and Professionals

Connect with other guys (age 20-50), and grow in faith through study and service opportunities, and receive prayer. Monday nights from 6:30 p.m. to 8:00 p.m., September through May.

Contact Chris Baldwin at chris@lopc.org for more information.

Neighbor to Neighbor

N2N is an East Bay initiative among Christians, Jews, and Muslims whose mission is to grow understanding and respect for the religions of the world.

Contact Terry Clark at terence.clark08@gmail.com for more information.

Men's Bible Study

The group meets on-campus in the Oak Room on the first Saturday of the month and is led by Larry Ricksen and Pastor Gerald Chinen.

Contact Larry Ricksen at lricksen@comcast.net for more information.

Young Families Connect

This is a large gathering of families with children (ages infant-4th grade) who meet on-campus at the back playground between services from 10:00 - 11:00 a.m. on the last Sunday of the month.

Contact Chris & Brie Riley at riley.brianne@gmail.com for more information.

10:10

10:10 is a weekly program between Sunday worship services that serves as a place to grow empowered to live in faith.

Contact Renée Wigginton at renee@lopc.org for more information.

Women's Bible Study

This women's Bible study group is open to all ages. This group meets on campus in Room 201 on the 1st and 3rd Thursdays of the month.

Contact Sue Nagle at suenagle@sbcglobal.net for more information.

Bible Study

This Bible study is open to all people and meets weekly on Thursdays at 8:00 a.m. in the Ministry Center Library (church office building).

Contact Darlene James at darlene.james@comcast.net for more information.

Living Into Our Calling: A six-week study on Ephesians

We'll find words of hope and challenge as we live into our calling to be the church! Thursdays, Jan. 16, 23, 30; Feb. 5, 12, 20; Mornings, 10:00-11:30 a.m. or Evenings, 6:30-8:00 p.m., Oak Room.

All are welcome! No Registration required.

First Friday Forum

January through June, join us for a popular series of six engaging monthly speakers that are relevant, timely, and of interest to our entire community.

Contact Darlene James at darlene.james@comcast.net for more information.

Congo Mission Team

The LOPC Congo Mission Team supports the Education and Trauma Healing work of the Presbyterian Church in the Democratic Republic of Congo as well as being advocates for the Congolese people. Meets on the first Sunday of each month.

Contact Herb Long at herblong7@gmail.com for more information.

Science & Religion

This class meets the third Monday of every month at 7:15 p.m. to learn, discover, and understand the relationship between science and religion. Drop-ins are welcome.

Contact Nancy Boren at nancy.boren@att.net for more information.

Voyagers

An opportunity to make friends and to share fun, food, fellowship, and service. for couples and singles, age 50 and over.

Contact Bev Fellows at beverlyfellows@comcast.net for more information.

Fourth Monday Book Group

2:00 - 3:30 p.m. Visitors and new members are always welcome!

Contact Jean Fiske at jdfiske@gmail.com for more information.

Fourth Friday Book Group

Join us at 4:00 p.m. every fourth Friday of the month for about an hour and a half to two hours of great discussion!

Contact Catherine Coleman at 510.928.9714, or awaitingword@gmail.com for more information.

Quilters

Quilters of all levels are invited. Quilts are donated to local groups which provide comfort to babies and children.

Contact Judy Kronmiller at bkron244@gmail.com for more information.

Rossmoor Parishes

Parish groups meet throughout the year to offer support and social interaction.

Contact Linda Ingalls at 925.954.7372 for more information.

Knit and Crochet Group

The “Chicks with Sticks” meet for fellowship and knitting/crocheting on Tuesdays, 1:00 p.m. - 3:00 p.m. in Room 202.

Contact Dianne Schneider at dianneschneider@hotmail.com for more information.

LOPC Breakfast Group

Meets on the fourth Wednesday of each month, September through May. 7:00 a.m. in the Davies Room.

Contact Joan Grimes at joan@lawofficeofjoangrimes.com for more information.

Presbyterian Women

Presbyterian Women is organized in circles: small groups that meet monthly for Bible study and fellowship, and host events open to all women of the church.

For more information, contact:

Diane Steuber at 925.283.3871 or at dhsteuber@sbgglobal.net

Helen Dygert 925.283.6010 or at dygerthl@comcast.net

groups to JOIN

Thursday Fellowship

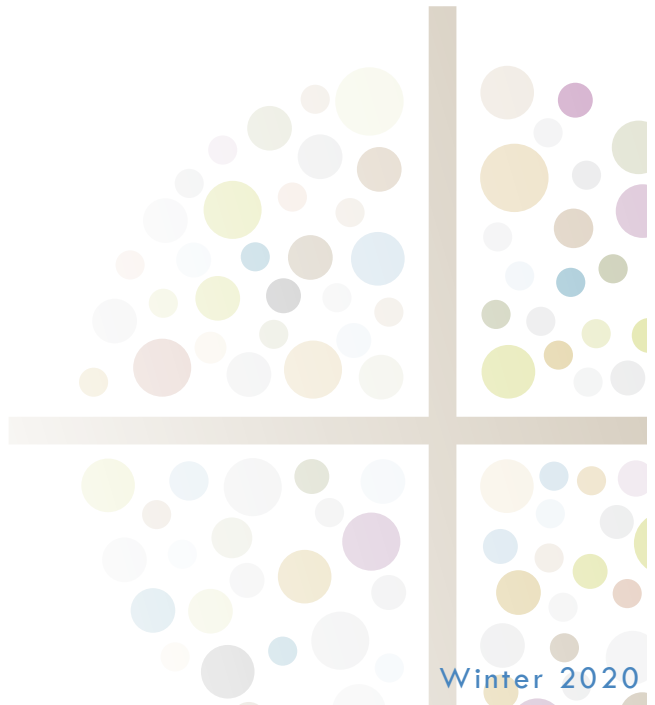
Thursday Fellowship offers a caring and social network for Seniors. Guests come for lunch, entertainment, crafts or gentle exercise, free-of-charge. Caregivers/family members welcome. Join us from 11:00 a.m. - 1:30 p.m.!

Contact Julie Peterson at julie@lopc.org or Clarita Woolridge at clarita@lopc.org for more information.

Freebirds

Freebirds is a social group at LOPC for couples and singles not constrained by kids' schedules. It is for adults looking to make a connection with other adults through shared activities such as meals, hikes, social hours, and service work.

Contact Sue Nagle at suenagle@sbcglobal.net for more information.



Places to SERVE

Children's Ministry Sunday Mornings

9:00 - 10:00 a.m. or 11:00 a.m. -
12:00 p.m.

Volunteer to lead or assist with a small group of children arranged by grade, Pre-K through 4th. The volunteer roles involve facilitating activities based on a Bible story and building relationships with the children. Time commitment: 1-2 Sundays per month.

**Contact Lori Robinson at
lori@lopc.org or 925.283.8722 x 251
for more information.**

Kid's Rock Wednesday Afternoons

3:00 p.m. - 5:30 p.m.

Volunteer to be part of a small group leadership team for eight to ten children, grades 1-4. Time: 2.5 hours per week for a five-week session.

Wednesday Evenings

5:15 p.m. - 6:00 p.m.

Volunteer to be a table leader with children during dinner. Time: 45 minutes per week for three five-week sessions.

**Contact Lori Robinson at lori@
lopc.org or 925.283.8722 x251
for more information.**

Youth Ministry Sunday Mornings

8:45 - 10:00 a.m.

Volunteer to support 5th through 8th grade programs and small group discussions. Curriculum, activities, and supplies provided. Time commitment: two hours per week, twice per month.

**Contact Allison Kunz at
allison@lopc.org or 925.283.8722 x
241 for more information.**

Youth Ministry Wednesday Nights

5:10 - 7:30 p.m.

Volunteer to support 5th through 8th grade youth group activities and small group discussions. No prep required. Time commitment: two and a half hours per week through March.

**Contact Allison Kunz at
allison@lopc.org or 925.283.8722 x
241 for more information.**

love does

love protects, love hopes, love never fails

love does affirms that our faith is active and that we can accomplish great things together. It matters that we are out in our communities doing things that make an impact, to remind others that we love them.

Look for opportunities to serve throughout the greater community and register as a volunteer at LOPC.org/lovedoes.

love does Congregational Work Day

Kicking off a year of service, our annual *love does* work day takes place on February 23! Look for more *love does* opportunities to follow throughout the coming year!



Contact Robin at robin@lopc.org for more information.

Winter 2020

special needs ministry

Contact Michelle Browning at michelle@lopc.org or at 925.283.8722 x248 for more information.

Capernaum Young Life Club

A weekly youth program for adolescents and young adults with special needs, ages 14-22. This ministry meets on Monday evenings, October through May.

Respite Night

Children with special needs and their siblings can join us for a fun evening. Our volunteers will be paired one-on-one with our guests to ensure that each child's needs are met and to develop meaningful relationships.

Special Needs Buddies

LOPC offers a buddy program for children with special needs on Sunday mornings and at special events. Volunteers work one-on-one with a child and accompany them to their class.

Note: All volunteers working with children, youth, and vulnerable populations must have a background check, provided by LOPC.

places to SERVE

For questions or to participate on any of these care teams, please contact Pastor Gerald Chinen at gerald@lopc.org or 925.283.8722 x227.

Barnabas Visits

Barnabas visitors are assigned a member of the church who may be unable to attend services or activities, and will make a visit to their home about once per month.

Cookie Bakers

Our Memorial Reception Team serves cookies at every memorial reception. If you like to bake, we would love to have your name on our “Cookie Bakers” list. When there is a need for cookies, you will be contacted by a Deacon.

Helping Hands

When church families are facing a transition of some kind and could use ready-made food, we deliver these meals. If you like to cook, we will keep your name on a list and when there is a need for more food, one of our deacons will contact you.

Stephen Ministry

Our congregation’s Stephen Ministry equips lay-people to provide one-on-one Christian care to people in our congregation and community who are experiencing difficulties in their lives.

Monday Morning Prayer Team

The prayer team meets every Monday morning in the Conference Room in the main office building at 9:15 a.m. The team prays for every request that is received from the Sunday morning worship services.

All-Together Prayer Team

This prayer team was formed from the All-Together Campaign. The team members receive prayer requests via email each week.

additional ways to serve

Reception Desk Volunteer Team

This talented team of volunteers intermittently helps staff the front desk when needed. Your cheerful attitude is the only requirement!

Contact Lexi Morrissey at lexi@lopc.org or 925.283.8722 x223 for more information.

All-Church Big Events Team

Help organize and throw Fellowship events for the entire LOPC community! We have service opportunities available such as decorating, hospitality/welcome, ticket distribution, and more!

Contact Chris Baldwin at chris@lopc.org or 925.283.8722 x110 for more information.

Voyager Ships Sunday Morning Coffee Service

This is an opportunity to greet and get to know the LOPC community while everyone is on campus.

Contact Ron Louis at ronlouis@pacbell.net for more information.

Connecting Team Advisor

A team that works to find ways for people to connect at LOPC in a meaningful way.

Contact Chris Baldwin at chris@lopc.org or at 925.283.8722 x110 for more information.

Floral Design Team

You are invited to join the team to design and assemble the Sanctuary flowers for Sunday morning worship services.

Contact Jane Ebe at ebe.jane@gmail.com for more information.

Sunday Morning Greeter

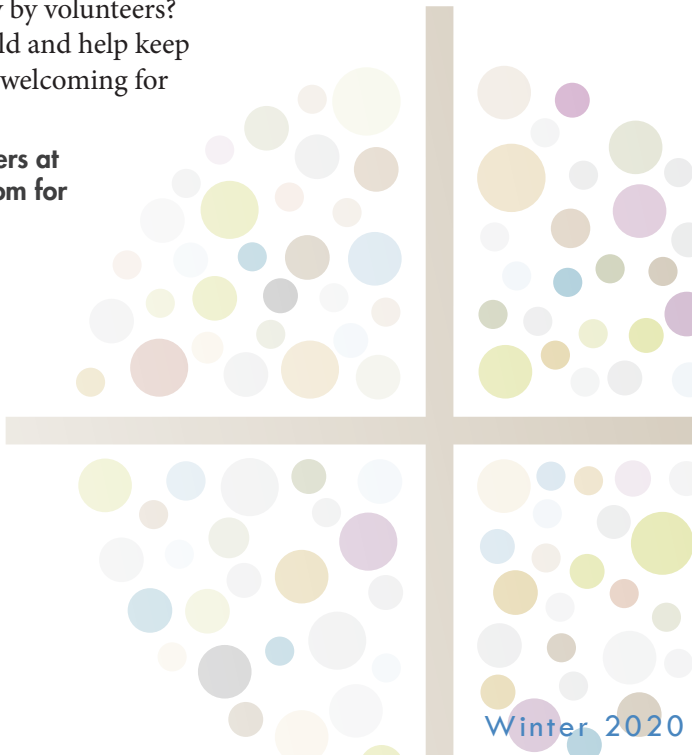
One of the easiest ways to meet many people at LOPC is to join the team of Greeters. Currently, four teams each for 9 a.m. and 11 a.m. services rotate their responsibilities every four weeks.

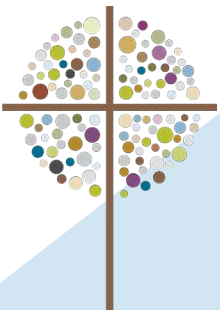
Contact Carol King at caking53@pacbell.net for more information.

Sanctuary Guild

Did you know that the Sanctuary pews are maintained entirely by volunteers? Join the Sanctuary Guild and help keep the sanctuary tidy and welcoming for all!

Contact Kimberley Rogers at fosterkimberley@aol.com for information.





LAFAYETTE-ORINDA PRESBYTERIAN CHURCH

49 Knox Drive

Lafayette, CA 94549

info@lopc.org • 925.283.8722 • lopc.org